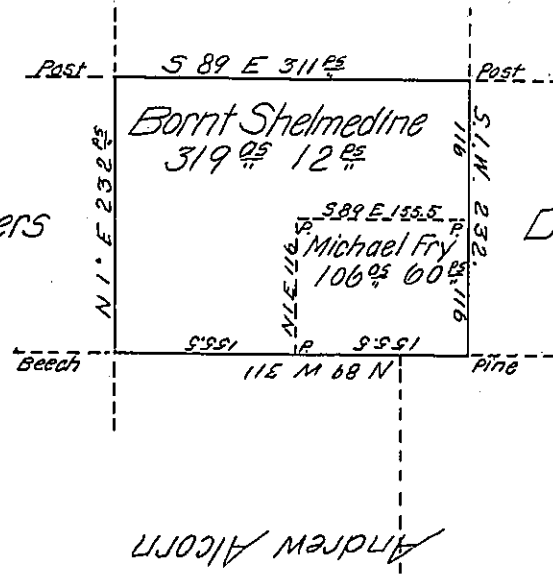


<sup>ac</sup> <sup>ac</sup>  
319-12 B. Shelmedine  
106-60 M Fry  
425-72.

John Watson

James Titus & others



David Kerr

Andrew Alcorn

In pursuance of the actual Settlement of Bornt Shelmedine commenced October 9<sup>th</sup> 1820 was Surveyed the 14<sup>th</sup> day of January 1837 the above described tract of land situate in Oil Creek township Crawford county containing 425 Acres 72 perches and allowance of Six per cent for roads &c 319 Acres 12 perches being for the Said Bornt Shelmedine, and 106 acres 60 perches from the South East corner as in the above plot described being for Michael Fry.

John Taylor Esq S. Genl

Eben<sup>r</sup>. Felton D.S.

I hereby certify that it does not appear from the Books or documents in my office that the above described land has been otherwise appropriated, (It is N<sup>o</sup> 11 on R Aldens draft and there marked as Surveyd to E Evans.)

Eben<sup>r</sup>. Felton D.S.

IN TESTIMONY that the above is a copy of the original remaining on file in the Department of Internal Affairs of Pennsylvania, made conformably to an Act of Assembly approved the 16th day of February, 1833, I have hereunto set my Hand and caused the Seal of said Department to be affixed at Harrisburg, this twelfth day of January 1905

*George R. Brown*  
Secretary of Internal Affairs.